

Haney Presbyterian Church

Congregational Profile: April 2026



11858 216 Street - Maple Ridge, BC - V2X 5H8 - Canada

Phone: 604-467-1715

eMail: haney.pc@telus.net

Website: <http://haneypreschurch.org>

Candidate Inquiries to:
Rev. Rebecca Simpson,
Interim Moderator
Phone: 604.226.8584
Email: rsimpson@standrews.edu

Table of Contents

Our Vision and Mission.....	2
The Vacancy.....	2
A Brief History of Haney Presbyterian Church.....	3
HPC Ministers 1947-2025.....	5
Congregational Leadership.....	6
Our Facility.....	8
Worship Services.....	9
Christian Education.....	10
Fellowship.....	11
Ministry and Outreach.....	13
Congregational Finances.....	17
Congregation and Community Statistics.....	19
Congregational Surveys.....	20
Maple Ridge and Pitt Meadows Overview.....	28

Our Vision and Mission

Haney PC is looking for a lead minister to help us understand the ‘WHY’ of our existence as a congregation in Maple Ridge, BC in 2026, as well as discover ‘HOW’ God wants us to be faithful in response.

Haney’s history was born out of a sense of mission to the Maple Ridge community having an impact on many young people, and discipling many in their relationship with the Living God, leading some into full-time Christian ministry such as Rev. Tony Plomp, Rev. Marion Barclay, Rev. Allen Aicken, Rev. Rebecca Simpson, Rev. Dennis Howard, and Rev. Curtis Bablitz.

More recently, the Session’s initial and prayerful efforts to discern God’s purposes for Haney today, follow similar themes and have led to this important albeit preliminary statement:

We believe God is calling us to:

- ***be a community of love, healing, and spiritual transformation, where people are nurtured towards wholeness in Christ (Col 1:28; Eph 4.5)***
- ***be equipped to follow Christ in our daily lives***
- ***be the presence of Christ (Body of Christ) in our community***
- ***be known as children of God and followers of Christ in the community***
- ***know and engage our neighbours and local community in the name of Christ***

We are looking for a minister who can help us further discern our God-given purpose for this time, and how we can put that purpose into action.

The Vacancy

Haney Presbyterian Church (HPC) is seeking a Minister of Word and Sacraments. The successful candidate will be welcomed as the congregation’s 11th minister, building upon the work of the Rev. Janet (Paddy) Eastwood (2017-2025). This congregation can trace its roots back to the 1870’s in the Haney – Maple Ridge area.

On May 31st, 2025, Rev. Eastwood announced her retirement after many faithful years of service. We honour her dedication and deeply appreciate the time she spent with us. The Presbytery of Westminster appointed Rev. Rebecca Simpson as interim moderator for Haney Presbyterian Church. Rev. Simpson is responsible for moderating Session meetings and overseeing the ongoing ministry of Haney Presbyterian Church as it seeks a full-time minister.

The Session appointed a Search Committee composed of the following congregational members and adherents:

- Lesli Altenried
- Robyn Batryn
- John Bell
- Neil Bylenga
- Maynard Embree (Elder, Co-Convener)
- Tina O’Connor (Secretary)
- George Ohia
- Nigel Taylor (Co-Convener)

A Brief History of Haney Presbyterian Church

Although Rev. Robert Jamieson came as a missionary to BC in 1862 and held periodic services in the Fraser Valley, it wasn't until the arrival of the Rev. Alexander Dunn in 1875 that the Presbytery of BC was organized and the first Presbyterian service was held in our area. That service was in Port Hammond in the home of John McIver, the grandfather of Jean Sloan, who was a long-time member of our congregation and the namesake of the newest addition to the current Haney Presbyterian Church building.

Rev. Dunn was succeeded in 1886 by Rev. Alex Tait, and it was during his ministry that St. Andrew's Presbyterian Church was built in Port Haney. Begun in 1888 and dedicated on



St. Andrew's Presbyterian Church, Haney, BC (1910)

March 20, 1889, the building served Presbyterians until 1925, at which time the congregation voted to join in the union that created the United Church of Canada.

Four dissenting Presbyterian individuals chose not to enter that union, and with another small group from the Hammond congregation, became a joint charge. In 1933 they erected a building in Hammond. A series of students and ordained ministers served the Haney/Hammond congregations until 1946.

In 1947 Rev. J. Murdo Pollock was appointed to the area. Each Sunday he held morning services in Mission, afternoon services in Hammond, and evening services in Haney. Rev. Pollock's ministry left its mark on many, especially the youth. Four of them responded to a Call to the ministry: Rev. Dr. Tony Plomp, Rev. Dr. Allen Aicken, Rev. Tom Aicken and later Rev. Marion Barclay MacKay.

In the early 1950s the Presbyterians of the area amalgamated, and Haney Presbyterian Church as we know it today came into being. A building fund was launched in 1956 with five dollars donated by the treasurer, George Barclay, and property was purchased on what we currently call 223rd Street. The new building was dedicated on March 30, 1958.

HPC 2026 Congregational Profile

By 1981 the congregation had outgrown those facilities and plans were approved for a new church to be built on 216th Street. During the two-year interval until the new church could be completed, the members held services in St. Andrew's United Church located on Dewdney Trunk Road at 222nd.

The new Haney Presbyterian Church was dedicated on October 2, 1983. The sanctuary's chancel was expanded in 1996, and an addition constructed in 2000. The Sloan Hall addition provided a visitor's lobby, an elevator, two new offices, a large hall/gymnasium and upgraded kitchen facilities.

Through the years the congregation has sought to grow together into a unified 'Community of the Concerned', sharing together in faith and fellowship, work and worship, supporting each other, and reaching out into the surrounding community and beyond. A detailed record of the first 140 years has been compiled, copies of which are available in the church's library.



Front of Sanctuary, Christmas (above) | Sanctuary and Balcony (below)



HPC Ministers 1947-2025

1947-1961	Rev. Murdo Pollock provided services in Mission, Hammond and Haney.
1958	A new church building on 223 rd Street was dedicated.
1961	Rev. John Howard served the Mission and Haney congregations.
1964-1974	Rev. John Nute served the congregation until his retirement.
1975-1980	Rev. Doug Maxwell served the congregation and initiated the search for new facilities due to growth.
1981-1987	Rev. G. Rex Krepps gave leadership during the relocation and building program of the new church building.
1983	Current church building on 216 th street was constructed and dedicated.
1988-1993	Rev. Scott Carlson served the Haney congregation and initiated two worship services: contemporary and traditional.
1994-2003	Reverend Robert Garvin served the congregation until his retirement. The congregation returned to a single worship service and grew in numbers. The Sloan Hall addition was dedicated in 2001. Many Christian Education activities were established or enhanced, including the Alpha Courses, Vacation Bible School and several outreach ministries.
2003-2004	Reverend Dorne Cornish, a retired minister and member of our congregation, held the position of Interim Minister during the vacancy period preceding the call to Rev Kris Davidson.
2004-2005	Reverend Kristian Davidson, a new graduate of Vancouver School of Theology, was ordained on March 21, 2004, and inducted as our minister. His ministry was just starting, when on January 7, 2005, he was killed in a road accident along with his wife Sheryl and older daughter Lauren. Their younger daughter, Katie, survived the accident and has been a focus of continuing prayer and concern by our congregation.
2006-2017	Rev. Dr. Gerard Booy came to Haney Church from Ontario and had previously pastored in South Africa. He provided a ministry that emphasized spiritual growth via scripture, prayer and a focus on pastoral care, supporting youth groups, retreats and camp weekends. His sons were active in the music activities of the church. His wife's unexpected death precipitated his new ministry in Spiritual Counselling for church leaders.
2010-2025	Rev. Janet (Paddy) Eastwood started at HPC in November 2010 as a diaconal minister primarily to support the faith development of children, youth and young families. In 2014 the congregation voted to extend a call to Paddy to continue her half-time ministry as Associate Minister. She was ordained in January 2015. In 2017, upon Rev. Booy's resignation, Rev. Paddy Eastwood was called as the lead pastor and went on to serve our congregation with immense care and compassion until the end of May 2025, when she officially retired.

Congregational Leadership

Session

Session meets monthly on the second Monday, from September to June, with special meetings scheduled as needed. Each Elder is responsible for a District of Members and Adherents. Several committees of Session meet to foster the work of our church. These committees and their Session chairs/representatives are:

Worship	Sue Reaveley
Christian Education	Joan Kerr
Mission	Gordon Shields (Clerk of Session)
Leading with Care	Susan Embree
Pastoral Care	Shared across all of Session
Personnel	Bob Garvin
Board of Managers	Sherry Irvine (Session representative)
Members at Large	Maynard Embree, Peet Du Toit

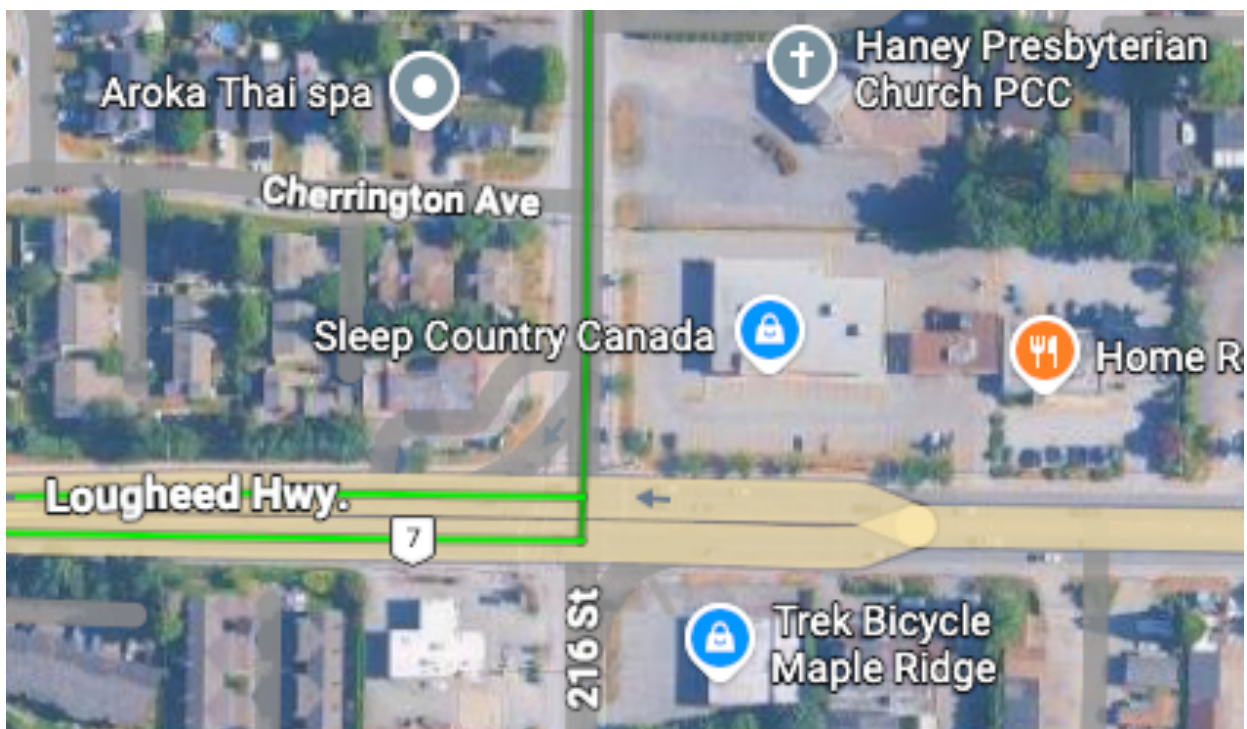
Note: The Session of Haney Presbyterian Church utilizes a “life elder” model, rather than having “term elders”.



The Session’s Mandate

Board of Managers

The Board is made up of individuals from our congregation elected for terms of one, two or three years. The Board meets on the third Monday of each month (July and August excepted) at 7:00 pm. The Board has a two-fold responsibility to the congregation. Firstly, its members oversee on-going maintenance of the church building and grounds, with much of the work done by Board members themselves, assisted by other members of the congregation. Secondly, they manage the financial affairs of the church, including income from congregational tithes and gifts as well as revenue derived from rental of church facilities. The Board also prepares the annual budget and manages church financial investments. The Board works closely with Session to ensure that our efforts support the primary objectives and mission of our church.

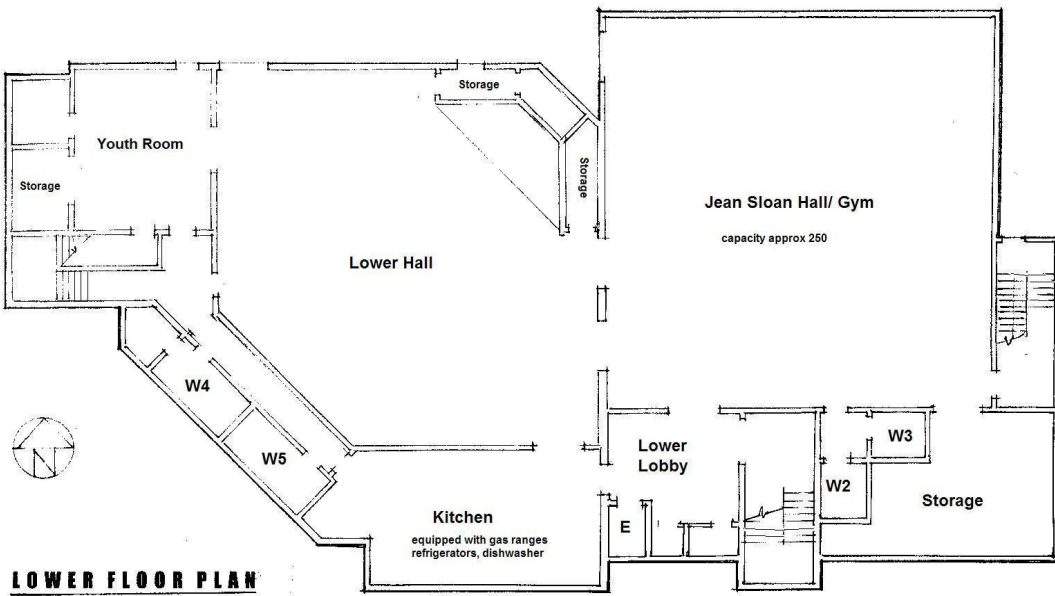
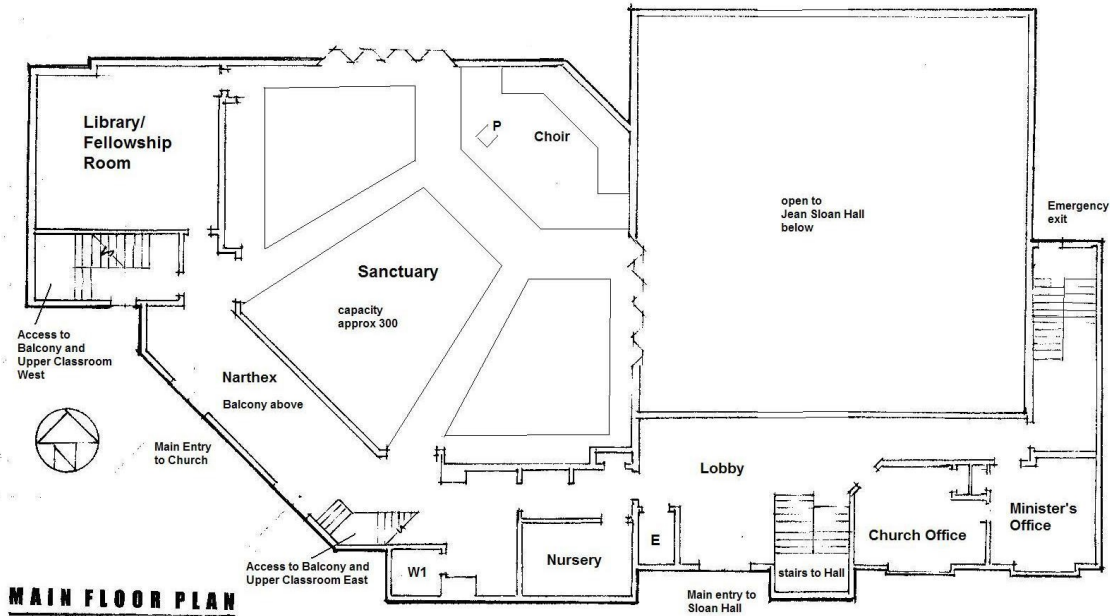


Source: (Google Maps, cropped screenshot)

85 parking spaces are available on the east, south and west sides of the building. Access to 216th Street is on the west side. The municipality recently installed a sidewalk on 216th Street. Outdoor activities are available during warmer months, including a small, enclosed playground for young children.

Our Facility

Our church facility is built on two floors, with a partial third floor comprising a balcony in the sanctuary and small classrooms above the Narthex. The key features of each floor are illustrated in the following floor plans.



Worship Services

Sunday Worship

We hold a single worship service on Sunday mornings at 10:00 am. Approximately 70 people have attended each week from January to March 2026. Services feature a blend of traditional hymns and contemporary praise music. Music is led by our Music Director, Mr. Nathan Mah, a professional and gifted pianist. A mixed choir provides special music from time to time. We use a projector and screen, and flat screen TV for visuals, and have a sound mixing board for the pulpit microphone, two wireless headsets and four roving microphones plus music and vocal inputs. Sharing our prayer concerns during the prayers of intercession is an important part of our worship and care for one another. The sanctuary is equipped with a T-Coil system for those using hearing aids.

- Communion is held the first Sunday bimonthly, as well as on Maundy Thursday. Occasionally we have communion by intinction.
- We encourage member participation. Lay members normally read Scriptures. Elders and members will occasionally preach. Members participate as ushers and greeters.
- We have an infant nursery space and a quiet room just off the sanctuary for parents of young children.
- Special services are held on Ash Wednesday, Maundy Thursday, Good Friday, Christmas Eve, and Christmas Day. Sunday morning services are followed by a time of fellowship over coffee or tea.



Our choir singing along to the service music

Christian Education

Thursday Bible Study

Every Thursday afternoon, a group meets to share in fellowship and faith, exploring studies that encourage thoughtful reflection and discussion.

Exploring the Word Bible Study

This bible study was designed to prepare our hearts for Sunday worship by engaging thoughtfully with the weekly lectionary texts, using the Feasting on the Word curriculum. Led by the Minister, this bible study usually takes place over zoom for accessibility.

Taking Faith Home

We include the Taking Faith Home insert in our weekly bulletin as a resource for all ages, encouraging meaningful connections between our worship at HPC and our daily lives at home. Each week's insert suggests scripture readings, prayers, and ideas for service, discussion, devotions, and faith-shaping rituals.

Prayground

This is a dedicated space at the back of the sanctuary for children to explore the main message of the worship service through different media. This includes the use of various toys, books, and relevant colouring pages.

Church Library

The HPC library holds an extensive collection of fiction and non-fiction books for both adults and children. Additionally, there is a selection of DVDs available.

Family & Youth

Friday Night Youth meet weekly on Fridays, with an average attendance of five participants, most often younger youth. Our games nights draw larger numbers and strong enthusiasm.



Friday Night Youth Activities

Fellowship

Ladies' Evening Fellowship

Meeting on the first Tuesday of each month, this group offers support and fellowship. It plans and executes many church events such as the HPC Christmas Dinner, Mother's Day Tea and special events.



Men's Group

This group meets over breakfast at 9am on the second Saturday each month. They hosted the recent garage sale at HPC and have plans for a future HPC car rally.

Christmas Dinner

Christmas dinner happens annually and all are welcome. This evening includes lots of joy, music, and games!



Sunday Post-Service Coffee / Tea

After each Sunday worship service, everyone is welcome to enjoy coffee or tea downstairs. This is an open space where congregants catch up and connect, while welcoming any new or visiting people who may have attended the service.

Tuesday Morning Coffee / Tea

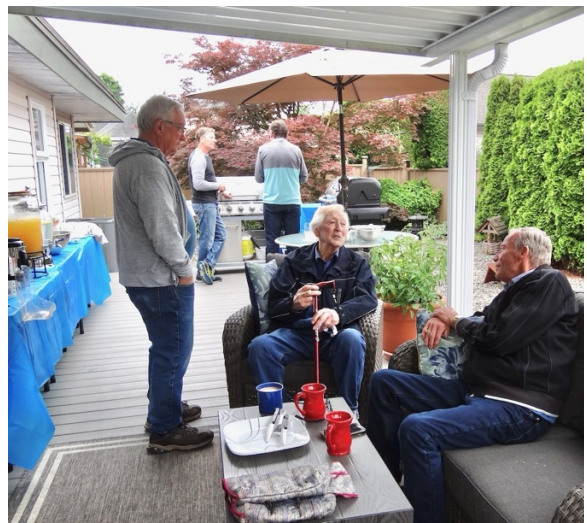
Every Tuesday morning, congregants meet up for coffee, snacks, and good conversation! All adults are welcome to join this more informal chat time.

Men's Appreciation Lunch

This lunch is to help demonstrate our gratitude for the men in the church and all they do.

Summer BBQ

We host an annual BBQ at one of our homes, for all congregants.



Spring Dinner

In the warmer months, this dinner welcomes the new season and brings the congregation into deeper relationship through conversation and food.

Mother's Day Tea

This annual tea is a celebratory event to honour the mothers within the church.

Garden Gathering

This annual tea and luncheon is for all the ladies within the church.



Ministry and Outreach

Greeters

These individuals are the faces you see when you walk through our doors on a Sunday morning. Handing out the weekly bulletin with a warm smile, our greeters signal the welcome awaiting inside.

Prayer Chain

This prayer ministry takes prayer requests from our church family, to support the needs of congregants and others. Dedicated individuals pray for those in need of prayer support.

Wednesday Zoom Prayer Meeting

A group of Elders meets via Zoom each week for thirty minutes to offer up prayers of gratitude, intercession, and praise to the Lord. We are also part of the Prayer Chain.

Pastoral Care Team

The Pastoral Care Team, under the leadership of the minister, is intended to assist those experiencing anxiety, grief, and loneliness; by listening, comforting, and praying; either by phoning or visiting.

Griefshare

Griefshare is a support group for those who are grieving. This program offers a warm and safe environment for participants to learn more about the grieving process and find connections during their difficult journey towards healing.

Mission and Outreach Committee

This Committee works to support the work of the Lord in our community and around the world by providing support to PWS&D. Funds are provided to support the Cariboo House Church ministry, WomanCare Ministry, Salvation Army Ministries, Mercy Touch, and Camp Douglas.

Congregational Newsletter

This quarterly newsletter touches upon the current life of the congregation as well as news from the National Church. HPC congregants are encouraged to submit their stories and reflections.

Cyberspace Bits and Bytes

HPC is active on the internet, with their Facebook profile, YouTube channel, and church's website. HPC's Facebook contains posts of spiritual inspiration, as well as invitations to the public for certain events throughout the year. HPC uploads an edited video of the Sunday Worship Service every week.

Ministry to Greystone

On the first Friday of each month, July and August excepted, three volunteers lead a short worship service at Greystone Manor, a retirement community in Maple Ridge. It is attended by those unable to attend Sunday services, and some are from the congregation.

Soup & Sandwich

The Ladies Evening Fellowship provide a delicious 'by-donation' soup and sandwich meal, held in Sloan Hall at noon on the last Wednesday of each month, with the exception of July, August, and December. On average 50 attend and everyone is welcome. Guests are invited to participate in song and music following the meal.

Community Meals

These meals are prepared in our church's kitchen and are served by our congregants on the first Saturday evening of each month. The meals are intended to aid disadvantaged folks in the general community and typically about 80+ people are served each time. Meals are served at a church in the centre of town. This team of 20 people works alongside other churches in the Maple Ridge area to serve weekly meals.



Maker's Spring Fling

Building community, HPC provides a venue for local vendors to offer their crafts and homemade goods for sale to the community and neighbours. Refreshments are also available.



HPC Craft Fair & Bake Sale

This Fall Fair includes the sale of many homemade goods and is open to the community. Not only is this a great way to fundraise, but also a wonderful opportunity for fellowship.



Garage Sale

Open to the community, donated items are offered for sale in the gym. Sometimes this includes fresh baked goods, handmade crafts. Refreshments are also provided.

Choir & Music Team

The choir and music team meets occasionally for rehearsal in preparation for special music throughout the year. Led by Nathan Mah, Music Director, the choir and music team prepare our hearts for joyful and reflective worship.



Audio-Visual Team

This group aids the technical side of Sunday worship. The members set up and operate the PowerPoint slides and the sound mixing throughout the service. They video record the service, edit and post it to YouTube, to share it with those not able to attend the service. The videos average between 20 - 40 online viewers per week.



Visual Arts Team

The Visual Arts Team plans for and provides seasonal displays for the sanctuary. The desire is not to ‘decorate,’ but to enhance the worship experience for congregants on Sunday morning, both in-person and online. The visual arts team also rotates the many banners in the Sanctuary.



Thanksgiving Décor in the HPC Sanctuary

Maintenance Committee

This team keeps the church building up and running throughout the year via regular Saturday tasks as well as small repair jobs. They also tend the grounds outside the church building.

Congregational Finances

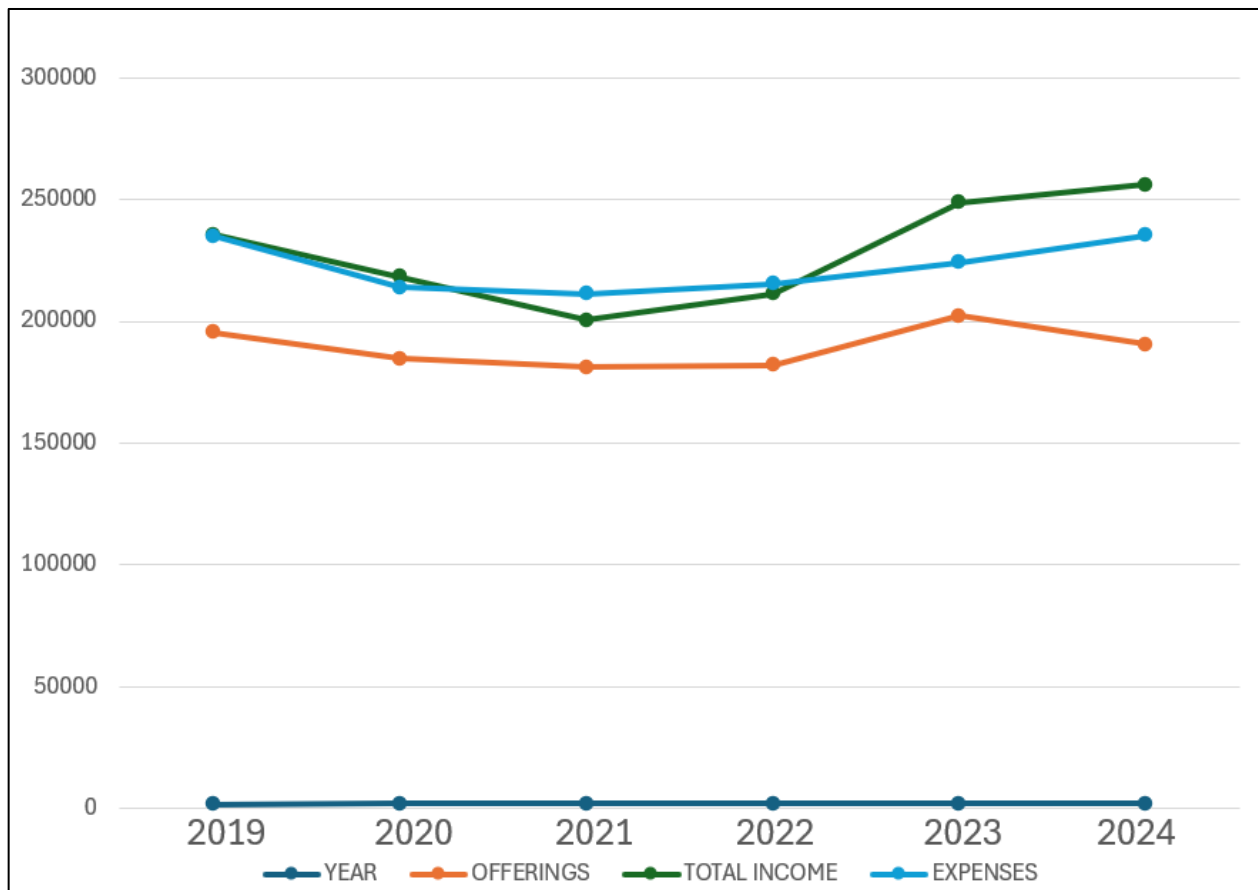
The accompanying charts outline the financial history of HPC over the past six years. Total income reflects offerings, fundraising initiatives, facility rentals, and other donations.

Like many congregations, we experienced a decline in givings during the COVID-19 pandemic (2020–2021). However, through creative fundraising efforts, careful stewardship, and the faithful generosity of our congregation, we were able to navigate that challenging period with resilience and stability.

In March 2023, through bequests and accumulated savings, we were able to invest in the Presbyterian Church in Canada’s Consolidated Fund. Over the past two and a half years, this investment has demonstrated meaningful growth, strengthening our long-term financial foundation. In both 2024 and 2025, operating surpluses have enabled us to further contribute to this investment, reflecting prudent financial management and a commitment to sustainability.

We believe we have been richly blessed, and we seek to steward those blessings faithfully. As a congregation, we are committed to being good caretakers of the resources entrusted to us, so that we may continue to serve as Christ’s hands and feet in our community and beyond.

Note: Candidates may request the HPC 2025 Annual Report for 2025 financial information.



HPC 2026 Congregational Profile

YEAR	OFFERINGS	TOTAL INCOME	EXPENSES
2019	\$ 195,590	\$ 235,488	\$ 235,017
2020	\$ 184,657	\$ 218,215	\$ 214,035
2021	\$ 181,154	\$ 200,398	\$ 211,377
2022	\$ 182,039	\$ 211,295	\$ 215,501
2023	\$ 202,196	\$ 248,676	\$ 224,118
2024	\$ 190,665	\$ 256,002	\$ 235,270

Source: HPC Treasurer

Remuneration for A New Minister

	\$/YEAR	NOTES
Stipend	\$61,000.00	*See below
Housing Allowance	\$36,000.00	Non-taxable benefit
House Utilities	\$3,000.00	
Book Allowance	\$600.00	
Phone	\$1,000.00	
Utilities (sewer & water)	\$716.00	Based on MR municipal rates
Continuing Education	\$1,000.00	
PCC Health & Dental	\$6,248.00	
Moving Expenses	Covered in full	

Source: HPC Treasurer

*Based on the 8th increment as per Presbyterian Church in Canada stipend schedule; subject to adjustment based on education and experience. Includes a 10% location increase adjustment, as directed by the Presbytery of Westminster, BC.

Congregation & Community Statistics

According to the 2021 five-year census, the surrounding suburban community of Maple Ridge and Pitt Meadows has a total population of 110,910 people spread across 267.82 square kilometers of land. This is estimated to increase to 132,800 by the end of 2026. There are a total of twenty-six churches in the area, with one of them being Presbyterian (PCC). Please see the charts below, depicting how the size and ages of our congregation across the years compares to those of Maple Ridge’s as a community.

Congregation Size 2021	Congregation Size 2026	Maple Ridge & Pitt Meadows Total Population 2021
274 people	203 people	110,910 people



Ages (Years)	2021 Congregation	2026 Congregation	Maple Ridge & Pitt Meadows 2021
0-5	0%	1.8%	5.5%
6-14	2.2%	0%	12.1%
15-24	8.2%	7%	11.2%
25-44	11.2%	11%	26.4%
45-64	25.9%	13%	28.8%
65+	52.2%	66%	16.1%

Congregational Surveys

The Search Committee asked the congregation to complete two surveys as preparation for this Congregational Profile.

Survey #1

Survey #1 was the PCC Pastoral Skills and Interests Inventory Form. This survey asked for a numerical ranking of pastoral skills from most to least desirable. These numbers were then tallied to produce the top ten results below. 49 surveys were returned to the Search committee.

Rank (High – Low Priority)	# of Selections (out of 49)	Skill/ Interest
1	47	Leading Worship and Preaching
2	43	Crisis Visiting
3	34	Pastoral Care
4	33	Personal and Spiritual Development
5	32	Equipping Church Members (Integrating Christian Faith with Life)
6	30	Work with Seniors
7	27	Leadership Development
8	23	Work with Youth
9	21	Evangelism
10	21	Christian Education



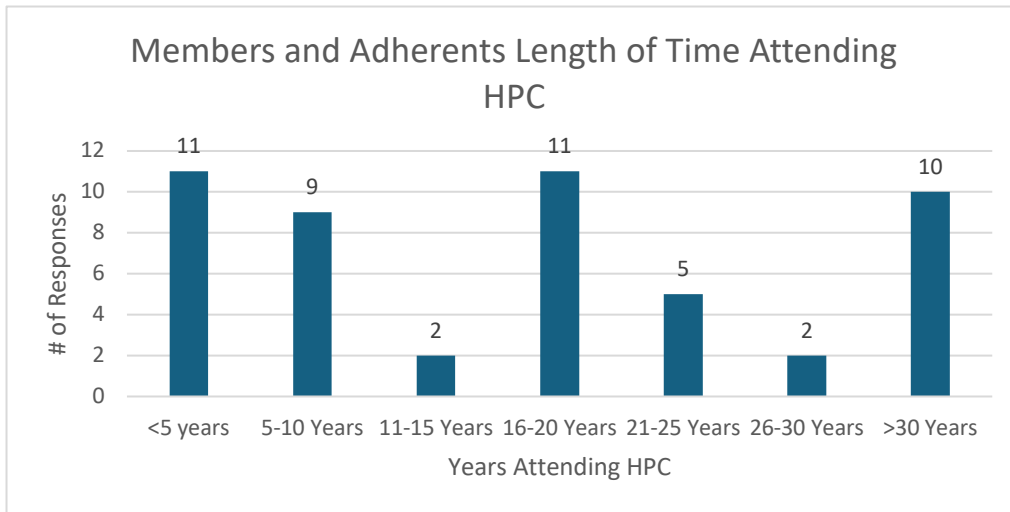
The Narthex

Survey #2

Survey #2 asked for written responses to questions created by the Search Committee. The answers on the 56 returned surveys were collated and pared down to common answers that represented the whole of the group. Some of these returned surveys were completely filled out while others had little data to glean. These answers are provided below.

HPC 2026 Congregational Profile

How long have you been attending HPC?



Interpretation:

- 50/54 of the surveys submitted answered this question, 4 left it blank
- The shortest time attended reported was 1.5 years, with the longest being 60+ years



Nursery / Youth Room

If you just began attending HPC in the last couple of years, did you previously attend a different church? (Y/N)

Y	N	N/A or Blank
13	2	39

What led you to feel HPC would be a good spiritual home for you?

- Summary:
- was made to feel welcomed
 - reading of scripture during worship
 - did not feel judged
 - bible based teaching
 - grew up Presbyterian

Notable Quotes:

“Warmth of the greeting my wife and I received on our first visit to HPC the first Sunday of November 2007. At the end of the church service we were immediately invited to attend lunch at the home of two members of the HPC congregation. The greeting of that Sunday left an indelible impression on both of us.”

“34 yrs ago my children were small and there were lots of activities for them—Sunday School, VBS, CGIT. There were many couples our age to socialize, build relationships with, grow spiritually with.”

Which one of the following most benefits your personal spiritual growth: Sunday Worship; Video of Worship Services; Worship at Care Homes; Bible Studies; Men’s and Women’s Fellowship Groups; Church Library; Devotional Books; Bulletins; and Religious Newspapers; Community Ministries? What are we missing that you would like to see?

Top priorities (listed from most frequent answer to less frequent):

- Sunday worship (this was first priority for most)
- fellowship groups
- community service
- online videos of Sunday worship service
- the church library

- Missing:
- evening bible study
 - home fellowship groups
 - more online options
 - outreach to struggling young people
 - Sunday school teachers and Sunday school

Mention an example of your own personal spiritual growth that has occurred at HPC in the last couple of years.

- Summary:
- rebuilding trust in the body of Christ via encouragement of others
 - serving more
 - more aware of God's grace
 - become more patient

Notable Quotes:

"I have enjoyed the Bible study groups with members who have experienced many different challenges in life."

"I have strengthened my belief that I am worthy of forgiveness and that God is always with me."

"I've attended many churches in the past but HPC is the first that felt a part of a spiritual family, learning more of Christianity and God."

What is distinctive about HPC? What is there about us that we can celebrate; qualities that we don't want to lose?

- Summary:
- friendly and supportive
 - welcoming and caring
 - bible based teaching
 - serving community meals
 - fellowship and friendship

Notable Quotes:

"Desire to assist others in need. Desire to encourage each other in spiritual growth."

"It is quietly worshipful, thoughtful, friendly, persevering, traditional."

"Companionship, the soup and sandwich. Interaction with helping making food in the kitchen. Caring about others."

If you met with the candidate at Tim Hortons, what would you like them to know about our church congregation and the community we serve?

- Summary:
- HPC is in a beautiful setting
 - HPC is a faithful, caring, and respectful community
 - HPC is full of sincere and hospitable people

Notable Quotes:

“I would first tell them how loving and genuinely caring the people are in our church. I would share that there is a strong sense of belonging—one that makes people want to come back. I would also highlight the congregation’s openness to new opportunities and challenges and their willingness to step forward in faith and with generosity, such as their commitment to sponsor refugees.”

“That HPC is welcoming. I’ve never felt like I have to convert. I can go and learn/connect and always feel welcome. Everyone is welcome.”

“That our church community is at the moment mostly of senior age, but we would welcome more young families. We are open to change—but not too much at once.”

What are some challenges or issues that you would like the new minister to address?

- Summary:
- getting more people involved in serving and tithing
 - attracting younger congregants
 - lack of programs for children
 - outreach to the unhoused (especially surrounding HPC’s physical location)

Notable Quotes:

“Encouraging youth to attend, and starting groups where they feel comfortable to ask questions about our Christian faith.”

“A somewhat disconnection from the community (its location makes it a bit hard to see). Make the outside including websites as welcoming as the congregation! Design welcome packages (physical and online)!”

“Too few of our members are shouldering the work of maintaining and operating the building and its programs. Encouraging and enabling volunteers for greater participation would be helpful.”

What vision do you believe God has for our future as a church?

Notable Quotes:

“I believe our church (although small, with an abundance of seniors) can effectively provide outreach to the community and assistance in providing for those in need using actions to demonstrate God’s love.”

“A continued beacon in the community whose light continues to shine brighter each day. We (HPC) are reaching others by drawing them in from outside or through online congregation.”

“God wishes us to grow stronger—to encourage those around us to come through the door and join us. To continue outreach and perhaps to extend it more fully with programs which could fill a need.”

The Session has identified the need to increase our ministry to seniors. What would you suggest?

- Summary:
- need younger members; integrated age activities
 - volunteer visits for fellowship or prayer
 - help with transportation to/from church events
 - physical activities for seniors
 - advertisements for HPC
 - pastoral visits
 - assistance with technology and social media

We know that we are currently a senior dominant congregation! If we were to attract a wider age range, how might we do so?

- Summary:
- church-based youth programs
 - appeal to average family needs
 - youth pastor
 - more contemporary music
 - partner with other churches

HPC 2026 Congregational Profile

How ready are you to accommodate and support change that occurs under the leadership of the new minister?

# of answers out of 56	Answer
6	Blank
23	Supportive
12	Some change can be good
9	No drastic changes
4	Okay as long as changes are based on scripture, theology, doctrine
4	If mutually advantageous then not opposed
4	Changes should be evaluated after short trial, then amended
3	Changes should not be initiated immediately
2	Will deal with them as they happen
2	Uncertain of support, depends on changes

Are there aspects of the surrounding community's needs that we have yet to meet?

# of answers out of 56	Answer
18	Blank
5	We are already doing good community work
4	Concern about volunteer capacity/burnout
4	Outreach to widowers and widows
3	Outreach to youth via church programs
3	School lunch and reading programs



HPC 2026 Congregational Profile

Since last June, we have had a variety of guest ministers leading our Sunday services. Which characteristics or personal qualities have impressed or uplifted you?

Top five, listed from most frequently mentioned to least:

- humour
- knowledge of God’s word
- meaningful, inspiring teaching
- clear speech, understood message
- forthright, authentic

If we expect our new minister to deliver thoughtful and succinct messages/sermons, should they be focused primarily on illuminating biblical texts, or social questions relevant to the congregation and community?

# of answers out of 56	Answer
5	Blank
21	A balance of both
15	More of a focus on the Bible
7	A focus on social issues

What work or life experiences could a new minister have that would benefit the congregation?

Rank (High to Low)	Answer
1	Comfortable with seniors and youth
2	Community minded
3	Good people skills
4	Compassion for the sick and lonely
5	Good Bible knowledge
6	Interested in outside ministries
7	Able to prepare members for ministry
8	Committed to building Christian values

Maple Ridge & Pitt Meadows Overview

Haney Presbyterian Church serves the Cities of Maple Ridge and Pitt Meadows. These two communities are part of the Greater Vancouver Regional District, and are located 45 kilometres east of downtown Vancouver.

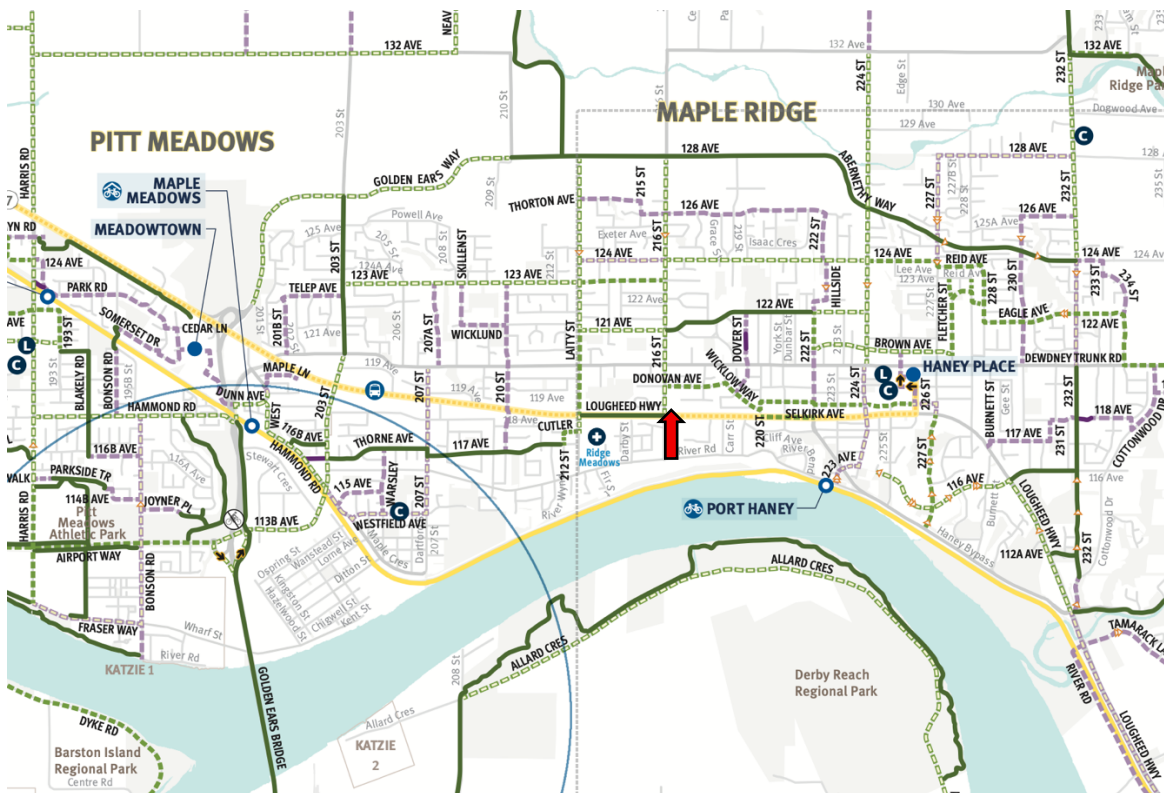
For more information on each municipality, please visit their official websites:

Maple Ridge – www.mapleridge.ca

Pitt Meadows – www.pittmeadows.ca

Maple Ridge and Pitt Meadows have separate municipal governments, but they share major services, including the Ridge Meadows Hospital and School District No.42.

Our proximity to Vancouver provides access to the services of a major urban centre while maintaining a rural setting. Both Maple Ridge and Pitt Meadows have shopping services. Green space and outdoor recreation abound, with Golden Ears Provincial Park and Alouette Lake a fifteen-minute drive from the centre of Maple Ridge. There is an extensive network of dykes with beautiful mountain views, and many additional trails in the parks of both cities.

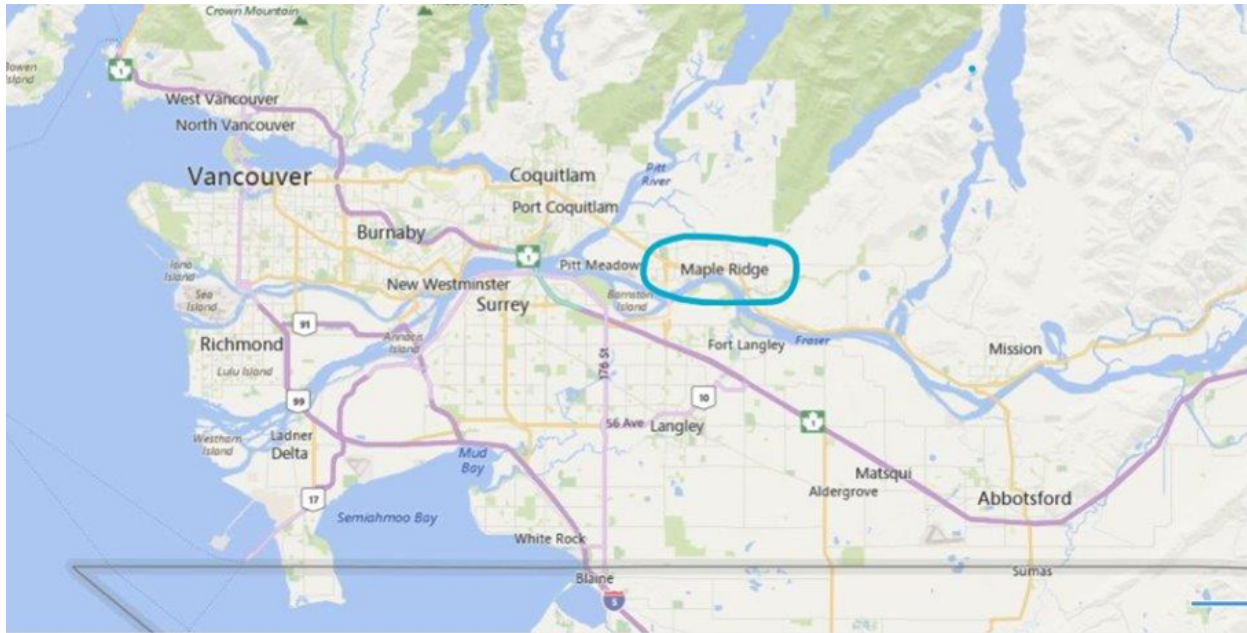


Community

Maple Ridge is a community located in incredible natural settings in British Columbia. Our southern border is the Fraser River, where our community was founded. Neighbourhood names like Port Haney, Port Hammond, Whonnock and Ruskin remain due to the early settlements along the river, which was the lifeblood of the community back in 1874 when we were incorporated. The northern boundary is equally spectacular with the Coastal Mountains providing us with breath-taking views year-round.

Maple Ridge also boasts amazing citizens who are engaged in their community in all fields. From amateur sports to the visual and performing arts, environmental stewardship to community advocacy and charity; this is a place where you can find and pursue your passions in life.

Maple Ridge is located in the northeastern section of Metro Vancouver. Our local mountain summits are the southernmost of the Garibaldi Ranges of the Coastal Mountains. Maple Ridge's downtown core is known as Haney.



Who Lives in Maple Ridge and Pitt Meadows?

The majority of our population are active young families with good jobs who are living in single-family homes. Maple Ridge has the most affordable real estate in Metro Vancouver.

There is also a large group of retired seniors living in both single-family homes as well as apartment buildings and care homes. Both cities have Senior's Centres with well established programs and services. Many are located in or near the downtown. A large Public Library is located conveniently downtown. Maple Ridge is also the setting for many family and romantic movies, and boasts a local film production industry.

Public Amenities:

Outdoor Recreation

Maple Ridge is proud of its stunning natural setting, which is why our city is a magnet for outdoor enthusiasts, with activities ranging from high-energy escapades to pleasant strolls in nature.

Depending on the location, there may be opportunities to go biking or hiking, play golf, or find a campsite for a weekend (or week-long) getaway. Adventures include the opportunity to stay at a guest ranch, or try your hand at climbing, and zip-lining.

Equestrian

Maple Ridge has an abundance of equestrian trails that weave throughout the city, with over ten local stables, facilities and centres, plenty of dedicated trails and road shoulders, as well as the Trans Canada Equestrian Trail that runs straight through Maple Ridge.

Fishing

The Fraser River flows through Maple Ridge and is well known for sturgeon and salmon fishing. Alouette, Rolley, Mike and Whonnock Lakes all contain freshwater fish including Dolly Varden, Rainbow and Cutthroat trout. Maple Ridge is also home to two local hatcheries: the Bell-Irving Hatchery located in Kanaka Creek Regional Park and the Allco Hatchery near Golden Ears Provincial Park

Golfing

Established in 1926, the Maple Ridge Golf Course was one of the first courses built in the Fraser Valley and sits high above the mighty Fraser River. The golf course sits on 16.187 hectares and was home to Maple Ridge founder John McIvor. The first town meeting was held under a maple tree at this location. The site is currently being repurposed as a multi-use park. Within Maple Ridge and Pitt Meadows, there are several world-class golf courses.

Hiking and Biking

Maple Ridge offers excitement and relaxation for cyclists of all levels. Try some laid-back biking along the 48km of dykes that follow the Fraser River, Pitt River, Alouette River or Kanaka Creek; or try a more challenging bike route in the rugged landscape in Golden Ears Provincial Park.

Parks and Trails

Maple Ridge has an extensive network of parks and trails to meet a diversity of recreational needs. Parks range in size from smaller neighbourhood parks in residential areas, municipal parks that offer areas for a specific activity and protect natural features, and community parks that provide large open spaces for sports activities.

The trail network includes over 100 kilometres (km) of local riding and hiking trails, as well as 50-60 km in nearby Golden Ears Provincial Park and UBC's Malcolm Knapp Research Forest. Regional and provincial parks add to the list of available outdoor recreation venues. An extensive dyke system along the Fraser River, Pitt River, Alouette Rivers and Kanaka Creek is popular for easy walking.



Maple Ridge Park

Skiing and Snow Sports

Maple Ridge is just a short drive to the local mountains. We are located just one hour from Sasquatch Mountain Resort, Seymour Mountain, Grouse Mountain and Cypress Mountain, and two hours from world-class skiing resorts at Whistler Blackcomb.

Climate

Maple Ridge has a mild coastal rainforest climate, similar to other communities in Metro Vancouver. Spring and fall can often be very warm and pleasant, especially from June through September. Summer temperatures range from 22 to 28°C (72 to 83°F). Winters are mild, and if snow falls it doesn't stay long. Average low temperature for December and January is 2 to 4°C (36 to 39°F). The City experiences an estimated 1,400 to 1,800 sunshine hours annually with 73% of the total occurring during April through September. The City receives approximately 1,788 mm of precipitation annually, with most rainfall occurring from October to March.

Educational Opportunities:

Elementary and Secondary Schools

School District No. 42 (Maple Ridge – Pitt Meadows) meets the learning needs of approximately 17,000 students of all ages. Maple Ridge has developed numerous skilled trades training partnerships with colleges and universities and is committed to educational choice and an inclusive, local approach to special education. There are 18 of 22 elementary schools and 5 of 6 secondary schools in the City of Maple Ridge; the others are located in Pitt Meadows.

Private Schools

- Maple Ridge Christian School offers education from Kindergarten to Grade 12. They aim to provide a Christian education that nurtures the heart, soul, mind and strength of each student. They work with families and local churches to build a caring community that is mission-minded. Maple Ridge Christian School’s vision is to see hearts and minds transformed—in their students—and in the world around us for the glory of God.
- Meadowridge is an independent, coeducational, International Baccalaureate World School offering students a university-preparatory education from Junior Kindergarten (age 4) to Grade 12. The 100,000 square foot facility is located in Maple Ridge.
- The Conseil Scolaire Francophone de la Colombie-Britannique (Francophone Education Authority of BC) is an independent school board that provides French programming to students who have French as a first language.

Post-Secondary Institutions

Maple Ridge is close to several public and private colleges and universities. Students may commute or stay in residence. UBC is home to the Vancouver School of Theology (VST) and Regent College. Trinity Western University and ACTS Seminary are located across the Fraser River in Langley. Below is a list of institutions located in the Lower Mainland.

BC Institute of Technology (BCIT) | Burnaby, Vancouver, North Vancouver & Satellite
Capilano University | North Vancouver
Douglas College | New Westminister & Coquitlam
Emily Carr University of Art + Design | Vancouver
Justice Institute of BC | New Westminister
Kwantlen Polytechnic University | Richmond, Surrey, Langley & Cloverdale
Langara College | Vancouver
Ridge Meadows College (SD42) | Maple Ridge
Simon Fraser University | Burnaby, Surrey, Vancouver
Trinity Western University | Langley
University of British Columbia, Vancouver School of Theology | Vancouver + Okanagan
University of the Fraser Valley | Abbotsford, Chilliwack, Mission, Hope
Vancouver Community College | Vancouver

THIS FINAL PAGE IS BLANK